



# World Time Attack Challenge

TECHNICAL REGULATIONS FOR PRO AM CLASS VEHICLES

Version 2

2026

# TECHNICAL REGULATIONS - 2026

---

## GENERAL REGULATIONS

Copyright Superlap Australia PTY LTD 2026.

No part of this document can be copied, redistributed or used for commercial or private purpose without written permission of Superlap Australia.

If you have any questions, please contact [technical@worldtimeattack.com](mailto:technical@worldtimeattack.com) and allow up to 14 days for a response.

The regulations of the World Time Attack Challenge (WTAC) are designed to ensure the highest level of safety. Each driver and vehicle must comply with all written and oral directions of the event promoters and/or event officials. Failure to comply may result in immediate exclusion from the event, with no refund of entry fees.

### 1. PREAMBLE

- 1.1 Each vehicle must remain in compliance with all provisions of the regulations contained herein and relevant Motorsport Australia regulations at all times during the event. Vehicles may be checked for compliance at any time throughout the event, refusal to comply will result in a penalty up to exclusion in conjunction with the Stewards.
- 1.2 Any aspect relating to the construction, modification and/or preparation of each vehicle that is not specifically authorised in these regulations or the relevant Motorsport Australia regulations is not permitted.
- 1.3 The Promoter reserves the right to invite vehicles to participate in the event that may not fully comply with the event regulations or technical regulations. Such entries will be at the sole discretion of the Promotor and may be subject to additional conditions as deemed necessary.
- 1.4 **WTAC Driver Classification for Pro and Pro Am is either T1 or T2. See Appendix 18 for a full list of classifications.**

### 2. VEHICLES

1. Each vehicle must be a recognised model from a vehicle manufacturer (see definitions).
2. A vehicle defined as an Open Wheel vehicle, Clubman, Kit Car or centre-steered vehicle are NOT permitted, as determined by the event promoter.
3. Each vehicle must have only four (4) wheels with the steering acting on the front wheels only unless rear wheel steering is originally fitted, in which case the original system may remain.
4. Each vehicle may only contain one conventional internal combustion engine, save for a Pro Am Class vehicle which may be fitted with a KERS or electric power type device.
5. Each vehicle must comply with the WTAC Safety Regulations.
6. Standard EV configuration
  - (i) A Series Production EV is permitted to compete in a Competition as detailed in the Electric Vehicle Appendix – Standing Regulations subject to:
  - (ii) the EV system/s being unmodified from that as produced by the original manufacturer for that Automobile; and compliance with each regulation for the classification/category under which it is entered, except that:

- (iii) where such regulation refers to an internal combustion engine (ICE), certain items (e.g. exhaust system, fuel system) are not applicable to an EV. However, it is noted that alternative EV requirements may be added.
- (iv) where such regulation permits a modification or a change to a component that if undertaken to a Series Production EV would require an EV system to be modified (e.g. a brake system for an EV with regenerative braking incorporated to its EV system) then that modification or change to a component is prohibited.

### **3. VEHICLE SIGNS**

- (a) Each compulsory event sponsor and event promotor decal, including numbers, as supplied by the event promoter must be placed on the vehicle as per instructions provided, by the event promoter. A vehicle found to be on track without each compulsory decal may be excluded from results.
- (b) Other than the event tyre supplier, no signage or livery of any tyre company larger than 500mm long by 200mm high and no more than four individual signs per vehicle is to be displayed on any competing vehicle.

### **4. GRANDFATHER CLAUSE**

**In certain and restricted circumstances, the event promoter may allow a vehicle of significant WTAC competition history to compete under the previous WTAC regulations. This will be at the sole discretion of the event promoter and any vehicle approved may be subject to a penalty as determined by the event promoter. This penalty may include the addition of weight over the minimum required, a tyre restriction or other penalty as determined and advised by the event promoter.**

## **SAFETY REGULATIONS**

### **1. DRIVER SAFETY APPAREL**

#### **1.1 As a minimum, each driver is required to wear the following which must be presented for inspection at pre-event scrutiny:**

- (a) a Helmet complying with the requirements for a National Speed Event and compatible for use with a Frontal Head Restraint (FHR), such as a Hans® device, in accordance with Motorsport Australia Manual: Technical Appendix – Schedule D Apparel.
- (b) footwear, socks and gloves each compliant with FIA 8856-2000 or 8856-2018 standard; and
- (c) in an open car, goggles or a visor with a lens material other than glass to a minimum of AS1609-1981 standard are mandatory.

### **2. APPAREL FOR WTAC PRO AM**

#### **2.1 For WTAC Pro Am Class, in addition to Article 1 Driver Safety Apparel, as a minimum each driver shall be required to wear the following which must be presented for inspection at pre-event scrutiny:**

- (a) a one-piece driving suit complying with, as a minimum, FIA 8856-2000 or 8856-2018 standard;
- (b) underwear complying with FIA 8856-2000 or 8856-2018.
- (c) a balaclava complying with FIA 8856-2000 or 8856-2018 must be worn.
- (d) A Frontal Head Restraint, such as a HANS® device of which each element of the device must comply with FIA 8858-2002 or 8858-2010 standard.

### **3. VEHICLE SAFETY**

**Each vehicle must comply, as a minimum, with Motorsport Australia Manual; Technical Appendix - Schedule A and B. The following is also required for WTAC Pro Am Class:**

- (a) a minimum of one (1) handheld fire extinguisher, with a minimum capacity of 900g, compliant with Motorsport Australia Manual; Technical Appendix - Schedule H.

- (b) A convertible type vehicle must be equipped with a hard top or a roll cage that complies with Motorsport Australia regulations, and/or meets the approval of the Chief Scrutineer.
- (c) a single brake light, mid mounted, which must operate when the brake is applied and must be easily and externally visible at the rear of the car.
- (d) fitted with a minimum of two functional rear vision mirrors.
- (e) a rear vision camera system may be used in place of rear vision mirrors. Each rear-view camera system must be approved by the Chief Scrutineer.
- (f) a minimum of a five (5) or six (6) point Safety Harness in compliance with Motorsport Australia Manual; Technical Appendix - Schedule I.
- (g) a motor sport seat compliant with FIA standard 8855-1999 or 8855-2021 or 8862-2009, as a minimum.
- (h) an on-board and plumbed in fire extinguisher system (firebomb) of a minimum of 2.4litre capacity compliant with Motorsport Australia Manual; Technical Appendix – Schedule H Fire Extinguishers.
- (i) a battery isolation (master) switch, which effectively isolates all electrical circuits from the battery and stops the engine. There must be second switch, or a remote means of operating the main switch, from the vicinity of the base of the A pillar on the driver side, and clearly marked in compliance with the Motorsport Australia Manual.
- (j) The use of any fluid coating on any bodywork (i.e. aerodynamic effect identifying fluid) is prohibited.

NOTE: The Motorsport Australia Technical Appendix is available online at:  
<https://www.motorsport.org.au/regulations/manual/technical-appendix>

WTAC Competitors are reminded to check the Technical Appendix for updates.

#### **4. ROLLOVER PROTECTION**

- (a) Rollover protection is compulsory and must be of a minimum of a Motorsport Australia Type 3 Safety Cage and incorporating National Race compulsory members and construction that complies with Motorsport Australia regulations, and/or meets the approval of the Chief Scrutineer.

#### **5. PRE-EVENT SCRUTINY REQUIREMENTS**

- 5.1 Each vehicle must present for scrutiny in a clean, tidy and ready to start condition. Scrutiny must be completed before the vehicle shall be permitted to take part in the competition or an on-track activity.**
- 5.2 Each vehicle that holds a Motorsport Australia Log Book must present the Log Book at Scrutiny.**
- 5.3 Following Scrutiny each vehicle will be fitted with a sticker confirming that the vehicle has passed scrutineering prior to it being able to compete.**
- 5.4 The event promoter will be the sole judge of eligibility for each vehicle in each WTAC class, in conjunction with the Chief Scrutineer.**
- 5.5 The following details further requirements for each vehicle, in accordance with the Motorsport Australia Manual:**
  - (a) ensure all loose objects are removed from the vehicle.
  - (b) have each battery firmly clamped and the battery location identified by a blue triangle.
  - (c) be fitted with two separate fastening systems on any bonnet or other panel where the leading edge can be raised.
  - (d) be fitted with a visible towing point (capable of accepting a 40mm OD cylindrical test object) fitted forward of the front axle and rearward of the rear axle and capable of towing the automobile on a sealed surface with its wheels locked. Where a tow point is obscured, each tow point shall be marked with the word "TOW" of a contrasting colour marking the location of each tow point.
  - (e) have fitted an adhesive cover to any forward-facing glass components, save for the windscreen.

- (f) have the engine compartment sealed completely from the cockpit.
- (g) be constructed to minimize the entry of foreign matter into the driving compartment from the road or road wheels.
- (h) have any propeller shaft and/or universal joint, if passing through the cockpit, fitted in a fixed casing.
- (i) be fitted with a device or devices that shall protect any longitudinal propeller shaft from striking the ground in the event of a component failure.
- (j) have any driving chain effectively guarded.
- (k) have any container within the cockpit which can hold more than 500mL of hot liquid (other than a series heater core) enclosed in a sealed compartment isolating it from the cockpit.
- (l) have each fuel tank vented externally to the bodywork.
- (m) be fitted with a bulkhead constructed from a flame - and liquid-proof material. This bulkhead shall effectively seal the cockpit from any fuel tank, fuel system pumps/collectors or refuelling system. If the material is constructed from polycarbonate, it shall be a minimum of 6mm thick.;
- (n) if fitted with any crankcase breather discharging to the atmosphere, each breather be vented into a catch tank of minimum capacity of two litres for engines up to a swept volume of 2000cc or three litres for over a swept volume of 2000cc.
- (o) if fitted with any engine radiator coolant vent discharging to the atmosphere, each coolant vent be vented to a catch tank of a minimum capacity of one litre.
- (p) each window or windscreen fitted made from a material which is clear or, if tinted compliant with Australian Standards AS2080.
- (q) if fitted with rigid brake pipes have such pipes made of steel bundy tubing or equivalent. The installation must be such to protect the pipes against vibration and damage.
- (r) if fitted with any camera/video recorder attached to the vehicle it must be securely mounted and approved by the Chief Scrutineer. Suction cup mounts will not be permitted to be fitted to the external surfaces of the vehicle without the addition of a secondary tether secured to the vehicle.
- (s) be fitted with a return mechanism which, in the event of any throttle linkage failure, will close each throttle.
- (t) be fitted with a driver-operable reverse gear.
- (u) be fitted with a steering wheel not incorporating any wood, unless such is the original component of the vehicle.

## 6. DURING EVENT SCRUTINY

**Each vehicle may be required, at the request of a scrutineer, to undergo any further check or inspection at any time during the event.**

- (a) any vehicle found to be leaking oil or fluids whilst competing will be suspended from the event until the Chief Scrutineer / Clerk of the Course is satisfied that action has been taken to rectify the leak.
- (b) any vehicle involved in any on track incident, including fluid leaks, component failure or any form of accident must have the vehicle checked and cleared by the Chief Scrutineer before it will be allowed to continue to compete in the event. Failure to do so may result in exclusion from the event.
- (c) should there be a further reoccurrence of any on track incident whilst competing then that vehicle will be deemed in breach of the regulations and may be applied a further penalty that may include exclusion from the event.
- (d) each tyre for use must be marked and recorded for each vehicle before use in the WTAC competition by the appointed tyre scrutineer.

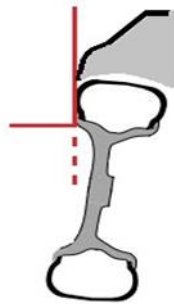
# PERMITTED VEHICLE MODIFICATIONS

## FURTHER NOTE:

Any vehicle that does not meet the regulations, requirements or definitions listed will need to be considered on a case-by-case basis. If your vehicle does not fit these regulations, you must submit your vehicle modifications for approval prior to the event. Any approval granted will be at the discretion of the event promoter.

## 1. BODY

- (a) Must be based on a production car and defined by the entrant, all measurements will be based on that particular body's OEM dimensions. The datum point for all measurements will be the lower centre of the front windscreen opening.
- (b) The silhouette of the defined car shall remain unmodified apart from the modifications permitted in these regulations.
- (c) Each wheel and tyre must be fitted so that the upper part of the tyre, down to the flange over the wheel hub centre must be within the perimeter of the automobile when viewed vertically from above, see Drawing 1



Drawing 1.

- (d) Alternative materials are permitted for all panels however all panels must retain the external shape, silhouette and style of the defined car apart from the modifications permitted in these regulations.
- (e) Must have at least two operational doors.
- (f) Front and rear bars may be modified to incorporate aero components. The front bar must not extend further than 150mm forward and the rear bar no further than 100mm rearward than the OEM bodywork of the vehicle.
- (g) Total Vehicle width in front view (measured at its widest point, excluding mirrors and front winglets/canards) must not exceed 350mm wider than the OEM vehicle bodywork.
- (h) Headlights may be removed but must be replaced with suitable decals in the original location.
- (i) Windscreen may be replaced with Lexan but must remain in the OEM position and comply with the OEM dimensions.
- (j) Taillights must resemble the OEM and be retained in original position. The addition of a single working brake light must be fitted as a minimum if original lights are inoperable.
- (k) Additional openings are permitted for the purpose of ducting air to the brakes, radiators, intercoolers and air box.

## **2. CHASSIS**

- (a) Chassis must be engineered to be fit for purpose.
- (b) Each vehicle must have a fireproof front and rear firewall.
- (c) No composite monocoques are permitted, unless the vehicle is OEM.

## **3. MINIMUM VEHICLE WEIGHTS**

**Minimum weight will be deemed to include all liquid tanks at normal levels and with a maximum of 5 litres of fuel. All weights are without driver.**

Minimum weight for Pro Am Class will be determined by the manufacturer's original specifications for the lightest version of that particular model of vehicle, minus 20%. E.g. Mitsubishi Lancer Evo 9 not merely Mitsubishi Lancer. Vehicles with original weight exceeding 1500kg will not apply the 20% rule but will have a minimum allowed competition weight of 1200kg.

## **4. AERODYNAMIC AIDS**

**4.1 Strength and method of aero component fastening will be checked thoroughly at scrutineering and if found to be unsuitable the vehicle will not be permitted to start until improvements are made to meet approval of the Chief Scrutineer.**

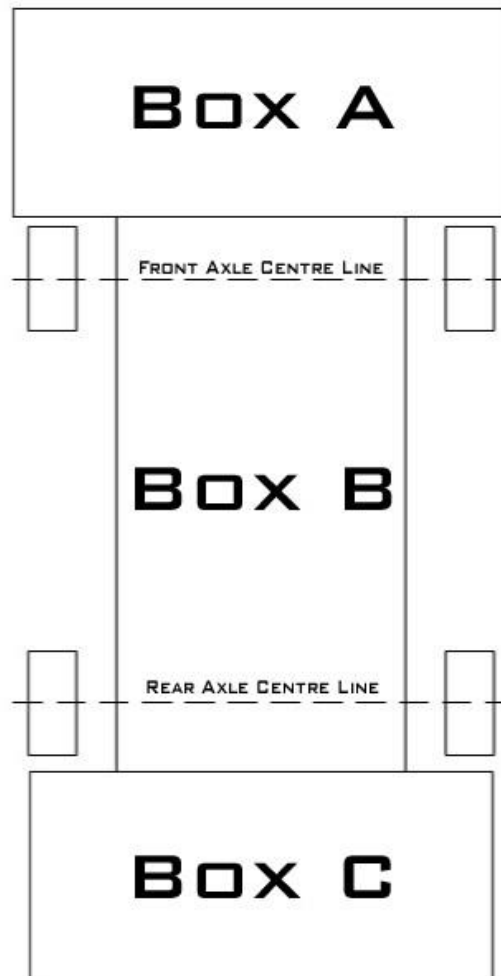
**4.2 Active aero including any hydraulically or electronically actuated or movable components are not permitted in any class.**

**4.3 All measurements have a tolerance of +/-3mm to allow for inaccuracy of hand measurement and thermal expansion.**

**4.4 The following is permitted for Pro Am Class:**

- (a) Flat floors are permitted in Pro Am Class. The flat floor is not permitted to be part of the structural monocoque. Mechanical force is not permitted to be used with the design of the floor.
- (b) Each aerodynamic aid must fit within the outline detailed in Drawing 2, and:
  - (i) Box A: Any aerodynamic aid forward of the front wheels must be no more than a maximum of 300mm forward and a maximum of 475mm wider each side than the OEM bodywork. It must be no higher than the highest point of the OEM bonnet.
  - (ii) Box B: Any aerodynamic aid in the area of the side skirt, between the front and rear wheel, is not permitted to be wider than the maximum permitted vehicle width as per Section 1.e.
  - (iii) Box C: Any aerodynamic aid rearward of the rear wheels must be no more than a maximum of 600mm rearward and a maximum of 150mm wider each side than the OEM bodywork. It must be no higher than a maximum of 300mm above the highest point of the OEM roof.

Drawing 2.



## 5. ENGINE

5.1 All vehicles must use a Commercial Fuel, E85 or Unleaded Racing Fuel in accordance with Schedule G of the Motorsport Australia Manual.

5.2 Engine changes during the event are permitted subject to the approval of the Chief Scrutineer.

### 5.3 For Pro Am Class:

- (a) Any internal combustion engine permitted, engine modifications are free.
- (b) The use of a turbocharger or supercharger is allowed.
- (c) Electric motors not allowed.

## 6. COOLING SYSTEM

- (a) Cooling systems and their locations are free provided they are contained within the bodywork.
- (b) A turbocharger/supercharger intercooler and mounting is free provided it is contained within the bodywork.
- (c) Oil cooling is free provided each cooler is fitted within the bodywork.

- (d) Ducting is permitted to be fitted externally to the bodywork provided it is contained within the permitted maximum dimensions of the bodywork.

## 7. FUEL SYSTEM

### 7.1 All fuel systems must comply with all safety regulations required in these regulations.

- (a) Fuel System is free.
- (b) The fuel tank must comply with Motorsport Australia Tank of Free Design or FIA Fuel Cell requirements.
- (c) Fuel tank/system must be sealed from the cockpit.

## 8. ELECTRICAL SYSTEM

- (a) Electrical System is free.

## 9. NITROUS OXIDE

**Nitrous Oxide is permitted on all vehicles in Pro Am Class.**

**The following details the requirements to use Nitrous Oxide. Any vehicle that does not meet these requirements will need to seek approval from WTAC PRIOR to the Event for any variation.**

**Competitors are reminded of the dangers associated with the incorrect use of nitrous oxide. It is highly recommended that systems are sourced in complete form, from a recognised manufacturer. The following regulations apply.**

- (a) **Nitrous Lines:** Must be outside of cockpit for the driver, except where the bottle is mounted in the driver's compartment, in which case the line must be plumbed outside the compartment as near as possible to the bottle outlet. Where lines pass converter or flywheel area, they must be encased in 3mm (1/8 inch) minimum thickness steel tubing. High pressure rated hose of minimum 1500 psi is required, and a sintered bronze filter, fit for purpose, must be fitted in the gas supply line.
- (b) **Bottle Mounting:** Bottles must be mounted outside of the engine compartment. Any bottle located in the driver's compartment must be mounted with metal brackets secured to a structural point of the vehicle, and a relief valve, vented outside the driver's compartment, to the atmosphere. Bottles must be upright or semi upright. Inverted bottles not permitted. Bottles must be equipped with on/off taps. Bottle shut offs requiring special keys are not acceptable. Bottles used must be purpose built for use with nitrous oxide. Electric devices used for raising the temperature of nitrous oxide bottles must be produced for that purpose by an industry manufacturer and may not be modified in any way.
- (c) **Switching:** Both solenoids must operate from a common switch and the system must be capable of being switched off by three means: (1) when the throttle is closed; (2) by a special arming switch that provides power to the solenoids; (3) through the normal ignition switch.
- (d) **Markers:** All vehicles using Nitrous Oxide must display special markers located on the outside of the vehicle, in the area where the supply bottle is located and adjacent to the vehicles WTAC competition No. on the side of the vehicle The marker shall be a yellow diamond with 125mm sides, with N<sup>2</sup>O printed in black letters.



- (e) **Warning Light:** A prominent blue warning light, located on the dashboard of the vehicle and visible through the windscreen, must indicate when the system is armed.

## 10. EXHAUST

### 10.1 The complete exhaust system for Pro may be modified or replaced in accordance with the following:

- (a) For rearward facing exhaust the outlet(s) shall be between 75mm and 600mm above the ground and within 100mm longitudinally of the rear of the bodywork. If the exhaust is directed sideways the outlet(s) must be located rearward of the midpoint of the wheelbase and shall not project beyond the maximum width of the vehicles bodywork or terminate more than 50mm inwards of the coachwork. A side exit exhaust must exit in a direction away from the centreline of the vehicle.

## 11. TRANSMISSION, DIFFERENTIAL AND DRIVELINE

- (a) Clutches and Flywheel are free.
- (b) Gearbox and Differential are free.
- (c) Gearbox and Differential oil coolers are permitted.
- (d) Transmission gear change operation is free but must be a function of the driver.

## 12. SUSPENSION

### 12.1 Each measurements have a tolerance of +/-3mm to allow for inaccuracy of hand measurement and thermal expansion.

### 12.2 Minimum ride height for Pro is 50mm: Each fully sprung part of the vehicle, except for the exhaust system, must be at least the specified height above the ground when measured at any point within the wheelbase, this includes all side skirts, splitters, bodywork etc. The vehicle ride height will be measured without the driver and tyre pressures at a minimum of 20psi.

### 12.3 All Competitors will be required to provide engineering validation on request of all suspension components including crack testing documentation.

### 12.4 For Pro Am Class:

- (a) Suspension is free.

## 13. BRAKES

### 13.1 The complete braking system is free.

## 14. TYRES

### 14.1 Tyres for Pro Am Class:

#### **PRO AND PRO AM CLASSES WILL NO LONGER BE USING A CONTROL TYRE.**

- (a) no modification to a tyre is permitted, save for the reduction of tread depth. Tread wear indicators as provided by the tyre manufacturer shall be the definitive indicator of tread depth. Each tyre must have tread in excess of the wear indicator save on the shoulder where localised wear may occur.
- (b) Competitors must provide full details of the tyres they will be using at the event to WTAC technical at least 14 days prior to the event for approval.
- (c) The onus is on the competitor to ensure the and suitability of the tyre for the application. The competitor maybe required to provide evidence of suitability.

## 15. WHEELS

- (a) Each wheel is free and size is unrestricted but must be suited to the tyre size used.
- (b) A maximum of one metallic spacer may be used behind each wheel. Consideration must be given to wheel stud length when fitting spacers.

## 16. INTERIOR

**Interior is free save for the following exceptions:**

- (a) Door trims of free material and design must be fitted.
- (b) Window nets may be fitted and are highly recommended.
- (c) Driving position may be moved rearwards, but not beyond the rear foot well.
- (d) Each vehicle must retain a full-length dashboard.

## 17. DEFINITIONS

- (a) **Alternative Materials** - Materials of suitable and acceptable strength and construction for use in motor vehicle parts and panels.
- (b) **Bodywork** - Refers to the exterior body of a motor vehicle as the entirely suspended part of the motor vehicle licked by the airstream.
- (c) **Motorsport Australia** - Confederation of Australian Motor Sport t/a Motorsport Australia
- (d) **Motorsport Australia Manual** – current Motorsport Australia Manual
- (e) **Chassis Rail** – Box section part of the vehicle floor structure that extends from the front of the vehicle to rear section.
- (f) **Dashboard** - A dashboard (also called dash, instrument panel, or fascia) is a control panel placed in front of the driver in a vehicle, housing instrumentation and controls for operation of the vehicle.
- (g) **Drive Types:**
  - (i) **4WD:** Four-wheel drive, includes all wheel drive, any vehicle that has drive to both the front and rear wheels.
  - (ii) **RWD:** Rear wheel drive, any vehicle with drive only to the rear wheels.
  - (iii) **FWD:** Front wheel drive, any vehicle with drive only to the front wheels.
- (h) **Engine Control Module** – Any electronic device that controls engine operation.

- (i) **Firewall** - A firewall is a fireproof barrier that separates the engine from the driver and passengers.
- (j) **Frame Rails** - Two primary boxed sections running fore to aft on the vehicle.
- (k) **OEM** - Original Equipment Manufacture - is the original manufacture of the vehicle and/or any component which is the one originally fitted when manufactured.
- (l) **Recognised Model** - A model which the organisers, at their sole discretion, recognise as a model of vehicle produced by a manufacturer to a given specification.
- (m) **Standard Specification** - As originally supplied from the manufacturer, including allowable production tolerances.
- (n) **Shock Towers** - The original manufacturer upper mounting points for the suspension shock absorber (i.e. Macpherson Strut)
- (o) **Sub Frame** - A structural component of a vehicle that uses an additional separate structure to carry certain components, such as the engine, drivetrain, or suspension. The sub frame is bolted to the original integral monocoque, chassis or frame rails of the vehicle and may be equipped with rubber bushings to dampen vibration.
- (p) **Suspension Pick-Up Point** - A bracket, lug or similar mechanical component attached to, or integral with, the fully sprung part of a vehicle, to which is attached a partially unsprung suspension component, and about which such suspension component moves through an arc or solid angle consequential to normal suspension travel.
- (q) **Suspension Upright and Hub:**
  - (i) **Upright** – the component that carries the hub and is connected directly to the suspension/steering control arms. The upright may carry brake components or other components as necessary.
  - (ii) **Hub** – the component which directly attaches to the wheel and is carried by the upright, via a bearing assembly. The hub, and bearing/s, may be integral to the upright or fixed to the upright and may carry the drive to the wheel.
- (r) **Vehicle** - A land vehicle propelled by its own means, running on at least four wheels not aligned, which are designed to be in contact with the ground. The steering must be controlled by at least two of the wheels, and the propulsion by at least two of the wheels.
- (s) **WTAC** - World Time Attack Challenge